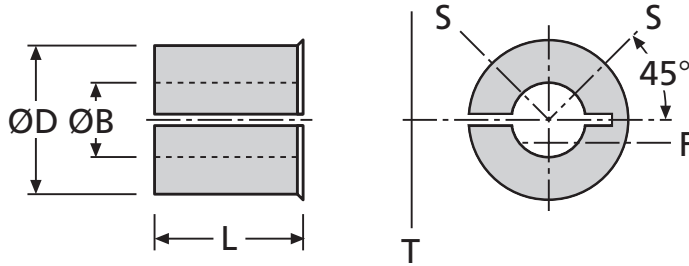


251
255

BORE REDUCERS

Bore Reducers

Brass



PART NUMBER	Diam ØD	Bore ØB	Length L	Material
251.11	5mm	2mm	0.170"	Brass
251.14	5mm	3mm	0.170"	Brass
251.15	5mm	0.120"	0.170"	Brass
251.16	5mm	0.125"	0.170"	Brass
251.18	5mm	4mm	0.170"	Brass
253.11	0.250"	2mm	0.260"	Brass
253.14	0.250"	3mm	0.260"	Brass
253.15	0.250"	0.120"	0.260"	Brass
253.16	0.250"	0.125"	0.260"	Brass
253.18	0.250"	4mm	0.260"	Brass
253.19	0.250"	0.1875"	0.260"	Brass
253.20	0.250"	5mm	0.260"	Brass
254.14	8mm	3mm	0.230"	Brass
254.15	8mm	0.120"	0.230"	Brass
254.16	8mm	0.125"	0.230"	Brass
254.18	8mm	4mm	0.230"	Brass
254.19	8mm	0.1875"	0.230"	Brass
254.20	8mm	5mm	0.230"	Brass
254.22	8mm	6mm	0.230"	Brass
255.14	8mm	3mm	0.320"	Brass
255.15	8mm	0.120"	0.320"	Brass
255.16	8mm	0.125"	0.320"	Brass
255.18	8mm	4mm	0.320"	Brass
255.19	8mm	0.1875"	0.320"	Brass
255.20	8mm	5mm	0.320"	Brass
255.22	8mm	6mm	0.320"	Brass

Material

Brass

Performance

Bore Tolerances: +0.03mm -0.00mm ØD Tolerances: +0.03mm -0.05mm

Other Info.

For optimum fastening, install as shown:- S = Screws in set screw hub T = Tangential screw in clamp hub

F = Recommended orientation of flattened shaft in set screw hub.

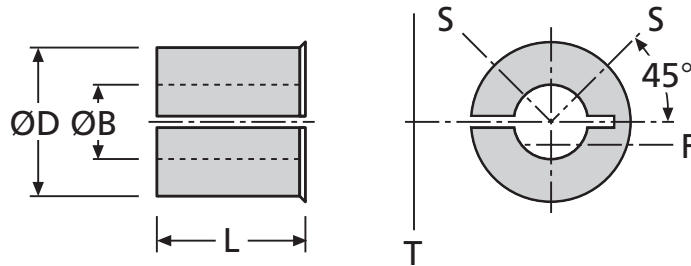
Note: that both traction and concentricity may be affected with using an adaptor. For best results shafts with h6 tolerance or better are recommended.

Undersized shafts become progressively less effective. For similar reasons, flattened shafts with more than ¼ of their diameter removed are not recommended.

BORE REDUCERS

257
263

Bore Reducers Aluminium



PART NUMBER	Diam ØD	Bore ØB	Length L	Material
257.18	10mm	4mm	0.320"	Aluminium
257.19	10mm	0.1875"	0.320"	Aluminium
257.20	10mm	5mm	0.320"	Aluminium
257.22	10mm	6mm	0.320"	Aluminium
257.24	10mm	0.250"	0.320"	Aluminium
257.25	10mm	7mm	0.320"	Aluminium
257.27	10mm	0.3125"	0.320"	Aluminium
257.28	10mm	8mm	0.320"	Aluminium
259.20	0.500"	5mm	0.420"	Aluminium
259.22	0.500"	6mm	0.420"	Aluminium
259.24	0.500"	0.250"	0.420"	Aluminium
259.25	0.500"	7mm	0.420"	Aluminium
259.27	0.500"	0.3125"	0.420"	Aluminium
259.28	0.500"	8mm	0.420"	Aluminium
259.30	0.500"	9mm	0.420"	Aluminium
259.31	0.500"	0.375"	0.420"	Aluminium
259.32	0.500"	10mm	0.420"	Aluminium
260.22	16mm	6mm	0.520"	Aluminium
260.24	16mm	0.250"	0.520"	Aluminium
260.25	16mm	7mm	0.520"	Aluminium
260.27	16mm	0.3125"	0.520"	Aluminium
260.28	16mm	8mm	0.520"	Aluminium
260.30	16mm	9mm	0.520"	Aluminium
260.31	16mm	0.375"	0.520"	Aluminium
260.32	16mm	10mm	0.520"	Aluminium
260.33	16mm	11mm	0.520"	Aluminium
260.35	16mm	12mm	0.520"	Aluminium
260.36	16mm	0.500"	0.520"	Aluminium
260.38	16mm	14mm	0.520"	Aluminium
261.27	20mm	0.3125"	0.790"	Aluminium
261.28	20mm	8mm	0.790"	Aluminium
261.30	20mm	9mm	0.790"	Aluminium
261.31	20mm	0.375"	0.790"	Aluminium
261.32	20mm	10mm	0.790"	Aluminium
261.33	20mm	11mm	0.790"	Aluminium
261.35	20mm	12mm	0.790"	Aluminium

PART NUMBER	Diam ØD	Bore ØB	Length L	Material
261.36	20mm	0.500"	0.790"	Aluminium
261.38	20mm	14mm	0.790"	Aluminium
261.40	20mm	15mm	0.790"	Aluminium
261.41	20mm	0.625"	0.790"	Aluminium
261.42	20mm	16mm	0.790"	Aluminium
261.45	20mm	18mm	0.790"	Aluminium
262.31	1.000"	0.375"	0.790"	Aluminium
262.32	1.000"	10mm	0.790"	Aluminium
262.33	1.000"	11mm	0.790"	Aluminium
262.35	1.000"	12mm	0.790"	Aluminium
262.36	1.000"	0.500"	0.790"	Aluminium
262.38	1.000"	14mm	0.790"	Aluminium
262.40	1.000"	15mm	0.790"	Aluminium
262.41	1.000"	0.625"	0.790"	Aluminium
262.42	1.000"	16mm	0.790"	Aluminium
262.45	1.000"	18mm	0.790"	Aluminium
262.46	1.000"	19mm	0.790"	Aluminium
262.47	1.000"	0.750"	0.790"	Aluminium
262.48	1.000"	20mm	0.790"	Aluminium
262.49	1.000"	22mm	0.790"	Aluminium
262.50	1.000"	0.875"	0.790"	Aluminium
263.35	28mm	12mm	0.980"	Aluminium
263.36	28mm	0.500"	0.980"	Aluminium
263.38	28mm	14mm	0.980"	Aluminium
263.40	28mm	15mm	0.980"	Aluminium
263.41	28mm	0.625"	0.980"	Aluminium
263.42	28mm	16mm	0.980"	Aluminium
263.45	28mm	18mm	0.980"	Aluminium
263.46	28mm	19mm	0.980"	Aluminium
263.47	28mm	0.750"	0.980"	Aluminium
263.48	28mm	20mm	0.980"	Aluminium
263.49	28mm	22mm	0.980"	Aluminium
263.50	28mm	0.875"	0.980"	Aluminium
263.51	28mm	24mm	0.980"	Aluminium
263.52	28mm	25mm	0.980"	Aluminium
263.53	28mm	1.000"	0.980"	Aluminium

Material

Aluminium

Performance

Bore Tolerances: +0.03mm -0.00mm ØD Tolerances: +0.03mm -0.05mm

Other Info.

For optimum fastening, install as shown:- S = Screws in set screw hub T = Tangential screw in clamp hub

F = Recommended orientation of flattened shaft in set screw hub.

Note: that both traction and concentricity may be affected with using an adaptor. For best results shafts with h6 tolerance or better are recommended.

Undersized shafts become progressively less effective. For similar reasons, flattened shafts with more than ¼ of their diameter removed are not recommended.



sales@rinomechanical.com



www.rinomechanical.com

