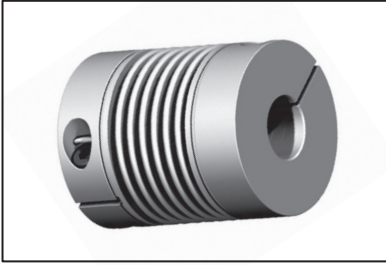


**MRB**CAD  
Drawings  
Available

# COUPLINGS

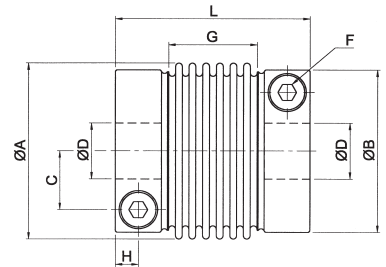
## Bellows Flexible Coupling Backlash Free *Clamp Fixing*



**Stainless Steel Bellows**  
**High stiffness**  
**High torque in compact package**  
**14mm to 1 3/8" bores**

### Technical Data

Size	Nominal Torque	Moment of Inertia	Torsion Resisance	Max. Misalignment			Mass	Toque to Tighten Screws
	Nm (lb-in)	10 <sup>3</sup> kgm <sup>2</sup> (lb-in <sup>2</sup> )	10 Nm/rad (lb-ft/Deg)	Axial	Lateral	Angular		
				mm (inch)	mm (inch)	Degrees	kg (lbs)	Nm (lb-in)
MRB50	25 (221)	0.09 (0.3069)	12 (154)	0.5 (0.0195)	0.2 (0.008)	2° (0.078)	0.22 (0.4796)	10 (88.5)
MRB60	50 (443)	0.22 (0.7502)	22 (282)	0.5 (0.0195)	0.2 (0.008)	2° (0.078)	0.43 (0.9374)	18 (159.3)
MRB80	125 (1106)	0.75 (2.5575)	44 (565)	0.5 (0.0195)	0.2 (0.008)	2° (0.078)	0.90 (1.962)	40 (354)
MRB100	200 (1770)	2.1 (7.161)	95 (1219)	0.5 (0.0195)	0.2 (0.008)	2° (0.078)	1.70 (3.706)	80 (708)
MRB120	400 (3540)	5.2 (17.732)	170 (2182)	0.5 (0.0195)	0.2 (0.008)	2° (0.078)	2.90 (6.322)	140 (1239)



Coupling must be selected so that the nominal torque  $M_n$  is higher than the highest operational torque of the application (i.e., during acceleration). Exceeding the nominal torque  $M_n$  can result in a permanent distortion of the metal bellows. Overall length tolerance is +/- 1-2mm.

### Dimensions: mm (inch)

Size	ØA mm (inch)	ØB mm (inch)	C mm (inch)	D mm (inch)	G mm (inch)	H mm (inch)	L mm (inch)	F screw size	M mm (inch)	ØD		Bushings to give finished bore sizes
										min. mm (inch)	max. mm (inch)	
MRB50	50 (1.97)	46 (1.81)	17 (0.67)	28 (1.102)	35 (1.38)	6.5 (0.256)	61 (2.40)	M5	20 (0.78)	10 (0.39)	28 (1.102)	14, 15, 16, 19, 24, 25mm, 1/2, 5/8, 3/4, 7/8, 1.000"
MRB60	61 (2.40)	56 (2.20)	20.5 (0.81)	28 (1.102)	33 (1.30)	8 (0.314)	66 (2.60)	M6	20 (0.78)	15 (0.590)	34 (1.339)	15, 16, 19, 24, 25mm, 5/8, 3/4, 7/8, 1.000"
MRB80	80 (3.15)	73 (2.87)	27 (1.06)	28 (1.102/1.65)	42 (1.65)	9.5 (0.374)	81 (3.19)	M8	20 (0.78/1.06)	16 (0.630)	44 (1.732)	16, 19, 24, 25, 30, 32, 35mm, 5/8, 3/4, 7/8, 1.000, 1.125, 1.250, 1.375
MRB100	98 (3.86)	88 (3.46)	33 (1.30)	42 (1.65)	46 (1.81)	11.5 (0.453)	93 (3.66)	M10	27 (1.06)	20 (0.787)	20 (2.126)	24, 25, 28, 30, 32, 35mm, 7/8, 1.000, 1.125, 1.250, 1.375
MRB120	118 (4.65)	108 (4.25)	41 (1.61)	42 (1.65)	46 (1.81)	13 (0.512)	98 (3.86)	M12	27 (1.06)	26 (1.024)	68 (2.677)	28, 30, 32, 35mm, 1.000, 1.125, 1.250, 1.375

Bore diameters smaller than  $\phi D_{min}$  are possible but reliable transmission of nominal torque  $M_n$  cannot be guaranteed. The frictional shaft/clamping hub connection allows a minimum clearance of 0.01 mm and a maximum clearance of 0.04 mm (i.e. H7/k6).

### Performance

Maximum Temperature: +150°C Approx.

### Material

Hub: Steel Bellows: Stainless Steel (SUS303L)

### Other Info.

Supporting part for stepping motor enabling detection of point of origin. Zero Backlash. High torsional stiffness and response. Complete absorption of eccentricity, angularity and end play by spring action of bellows configuration.

Uniform rotation speed, even under mis-alignment.

Identical clockwise and anti-clockwise rotational characteristics.

Maintenance free oil and chemical resistant.

**rino**

Toll Free!

**1-888-260-7466****516-867-5656**



