



# Couplings

## Flexible Coupling - Inch Bores

High Torque Single & Double Disks Clamp Fixing

### Material

#### Hub:

Aluminium (A2017)

#### Spacer:

Aluminium (A2011)

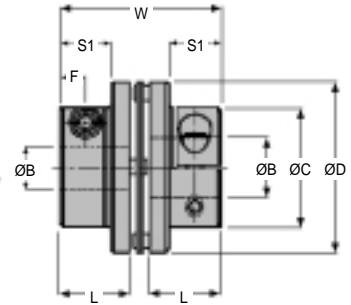
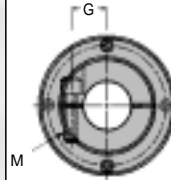
#### Pin:

Stainless Steel (SUS301)

#### Pin & Disk:

Stainless Steel (SUS303)

### MHSX-C Type SINGLE DISK



### Performance

#### Max Temp:

+100°C Approx.

### Other Info.

Identical clockwise & anti-clockwise rotational characteristics.

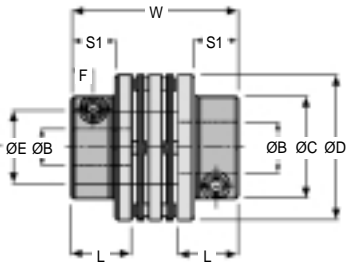
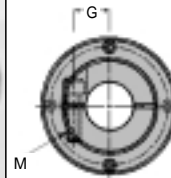
High torsional stiffness and high response.

Zero backlash.

Double stainless steel disks completely absorb eccentricity, angularity and end play.

Maintenance free, excellent resistance oil and chemicals.

### MHWX-C Type DOUBLE DISK



PART NUMBER	Max. Rpm	Mass g	Moment of Inertia kg-m <sup>2</sup>	Static Torsional Stiffness Nm/rad	Max. Eccentricity	Max. Angularity	Max. Axial Play
<b>SINGLE DISK</b>							
MHSX-32C	4800	38	4.5 x 10 <sup>-6</sup>	1300	-	1°	±0.20
MHSX-40C	3800	66	1.2 x 10 <sup>-5</sup>	2800	-	1°	±0.20
MHSX-50C	3100	120	3.7 x 10 <sup>-5</sup>	3700	-	1°	±0.20
MHSX-63C	2400	190	8.4 x 10 <sup>-5</sup>	5000	-	1°	±0.20
<b>DOUBLE DISK</b>							
MHWX-32C	4800	48	6.2 x 10 <sup>-6</sup>	1000	0.15	2°	±0.40
MHWX-40C	3800	81	1.6 x 10 <sup>-5</sup>	1500	0.20	2°	±0.50
MHWX-50C	3100	150	4.6 x 10 <sup>-5</sup>	2000	0.20	2°	±0.60
MHWX-63C	2400	230	1.1 x 10 <sup>-4</sup>	2500	0.30	2°	±0.80

PART NUMBER	Bore Both Ends ØB	Max. Bore ØB	ØE	F	L	W	ØC	S1	M	G	Rated Torque Nm	Max. Torque Nm	
<b>SINGLE DISK</b>													
MHSX-32C	32	1/4"	10	-	4	13.70	32	22	9	M3	8.00	2.8	5.6
MHSX-40C	40	3/8"	14	-	6	16.50	38	28	12	M4	10.50	6.0	12.0
MHSX-50C	50	1/2"	20	-	7	19.40	44	39	15	M5	14.75	12.0	24.0
MHSX-63C	63	3/4"	25	-	8	22.30	50	45	18	M6	17.00	19.0	38.0
<b>DOUBLE DISK</b>													
MHWX-32C	32	1/4"	10	15	4	13.70	40	22	9	M3	8.00	2.8	5.60
MHWX-40C	40	3/8"	14	25	6	16.50	46	28	12	M4	10.50	6.0	12.00
MHWX-50C	50	1/2"	20	25	7	19.40	52	39	15	M5	14.75	12.0	24.00
MHWX-63C	63	3/4"	25	32	8	22.30	58	45	18	M6	17.00	19.0	38.00



Mechanical Components Inc.

Phone: 516-867-5665 Toll Free: 1-888-260-RINO Fax: 516-867-5656



# Couplings

## Flexible Coupling - Metric Bores High Torque Single & Double Disks Clamp Fixing

### Material

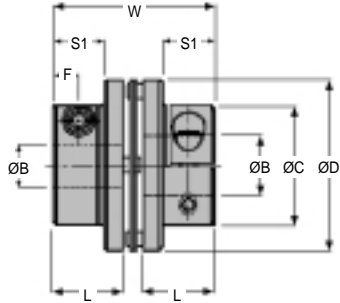
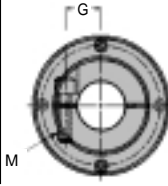
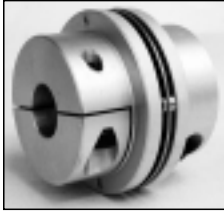
**Hub:**  
Aluminium (A2017)

**Spacer:**  
Aluminium (A2011)

**Pin:**  
Stainless Steel  
(SUS301)

**Pin & Disk:**  
Stainless Steel  
(SUS303)

### MHS-C Type SINGLE DISK



### Performance

**Max Temp:**  
+100°C Approx.

**Other Info.**  
Identical clockwise &  
anti-clockwise  
rotational  
characteristics.

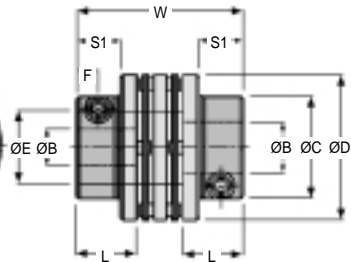
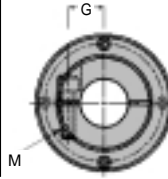
High torsional  
stiffness and high  
response.

Zero backlash.

Double stainless  
steel disks  
completely absorb  
eccentricity,  
angularity and end  
play.

Maintenance free,  
excellent resistance  
oil and chemicals.

### MHW-C Type DOUBLE DISK



PART NUMBER	Max. Rpm	Mass g	Moment of Inertia kg·m <sup>2</sup>	Static Torsional Stiffness Nm/rad	Max. Eccentricity	Max. Angularity	Max. Axial Play
<b>SINGLE DISK</b>							
MHS-32C	4800	38	4.5 x 10 <sup>-6</sup>	1300	-	1°	±0.20
MHS-40C	3800	66	1.2 x 10 <sup>-5</sup>	2800	-	1°	±0.20
MHS-50C	3100	120	3.7 x 10 <sup>-5</sup>	3700	-	1°	±0.20
MHS-63C	2400	190	8.4 x 10 <sup>-5</sup>	5000	-	1°	±0.20
<b>DOUBLE DISK</b>							
MHW-32C	4800	48	6.2 x 10 <sup>-6</sup>	1000	0.15	2°	±0.40
MHW-40C	3800	81	1.6 x 10 <sup>-5</sup>	1500	0.20	2°	±0.50
MHW-50C	3100	150	4.6 x 10 <sup>-5</sup>	2000	0.20	2°	±0.60
MHW-63C	2400	230	1.1 x 10 <sup>-4</sup>	2500	0.30	2°	±0.80

PART NUMBER	ØD	Bore Both Ends ØB	Max. Bore ØB	ØE	F	L	W	ØC	S1	M	G	Rated Torque Nm	Max. Torque Nm
<b>SINGLE DISK</b>													
MHS-32C	32	6.00	10	-	4	13.70	32	22	9	M3	8.00	2.8	5.6
MHS-40C	40	8.00	14	-	6	16.50	38	28	12	M4	10.50	6.0	12.0
MHS-50C	50	12.00	20	-	7	19.40	44	39	15	M5	14.75	12.0	24.0
MHS-63C	63	16.00	25	-	8	22.30	50	45	18	M6	17.00	19.0	38.0
<b>DOUBLE DISK</b>													
MHW-32C	32	6.00	10	15	4	13.70	40	22	9	M3	8.00	2.8	5.60
MHW-40C	40	8.00	14	25	6	16.50	46	28	12	M4	10.50	6.0	12.00
MHW-50C	50	12.00	20	25	7	19.40	52	39	15	M5	14.75	12.0	24.00
MHW-63C	63	16.00	25	32	8	22.30	58	45	18	M6	17.00	19.0	38.00



Mechanical Components Inc.

Phone: 516-867-5665 Toll Free: 1-888-260-RINO Fax: 516-867-5656