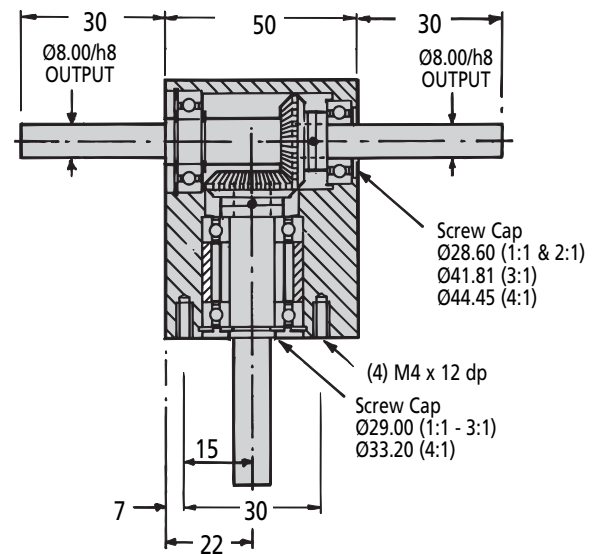
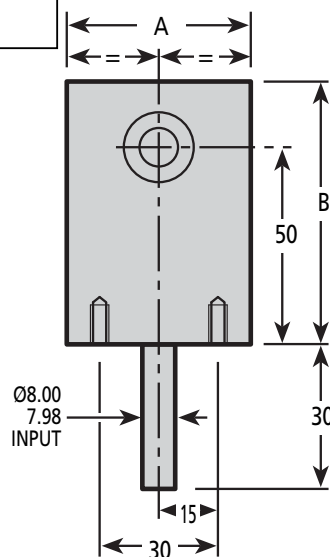
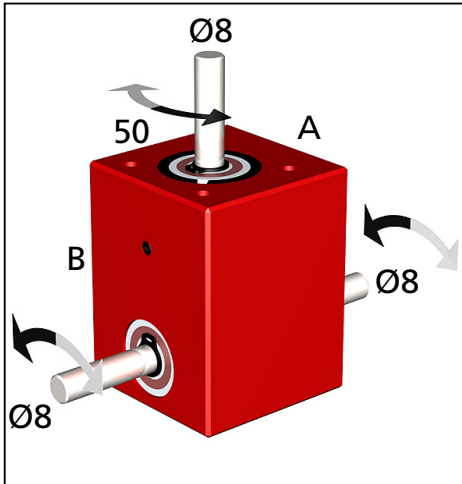


**BL8**e-cad  
Drawings  
Available

# GEARBOXES

## Bevel Tee Gearbox

Right Angled Drive 0.4Nm – 4Nm **1:1 - 4:1**

Part Number	Ratio	Efficiency at 1000 Rpm	A	B
BL8-1	1:1	88%	50	65
BL8-2	2:1	88%	50	65
BL8-3	3:1	88%	50	75
BL8-4	4:1	88%	60	80
BL8-XH	1:1 - 4:1	Hardened Gears (= Nm x 2)		

### Material

Case: Aluminium.

Bevel: Medium Carbon Steel 080M40(EN8).

### Performance

Weight: 0.56kg (1:1), 0.54kg (2:1) 0.66kg (3:1), 1.10kg (4:1)

Backlash:  $\approx 1^\circ$ .

Max Input Speed: 2000 Rpm.

Greased for life: Shell Alvania Grease HDX2.

### Other Info.

Testing in your applications is necessary.

You will need to assess duty, cycles and confirm gearbox suitability with your own calculations.

Torque figures are to be used for guidance only.

### Output Torque Nm

Rpm Input	Reduction Ratio			
	1:1	2:1	3:1	4:1
2000	0.40	0.20	0.50	0.80
1000	0.50	0.30	0.50	0.90
500	0.50	0.30	0.60	1.10
200	0.60	0.40	0.70	1.30
100	0.70	0.40	0.80	1.40
50	0.80	0.40	0.90	1.60
10	1.00	0.60	1.20	2.00

Toll Free!



1-888-260-7466



516-867-5656

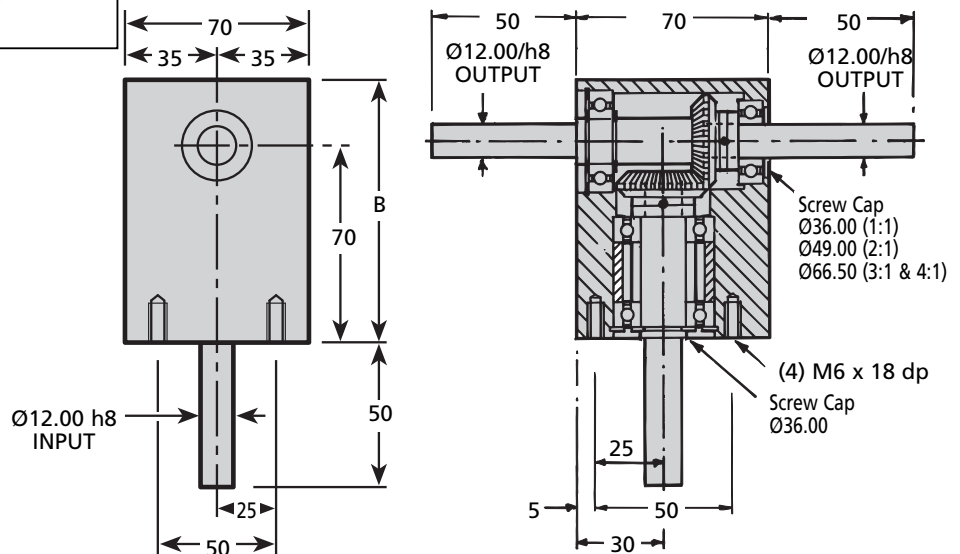
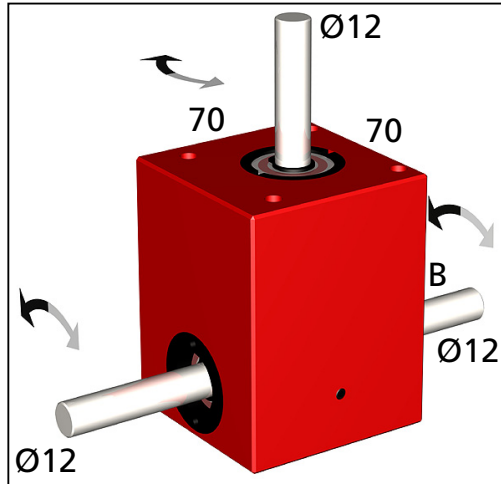
# GEARBOXES

e-cad  
Drawings  
Available

**BL15**

## Bevel Tee Gearbox

Right Angled Drive 1.1Nm – 11Nm **1:1 - 4:1**



Part Number	Ratio	Efficiency at 1000 Rpm	B
BL15-1	1:1	88%	90
BL15-2	2:1	88%	105
BL15-3	3:1	88%	110
BL15-4	4:1	88%	120
BL15-XH	1:1 - 4:1	Hardened Gears (= Nm x 2)	

### Material

Case: Aluminium.

Bevel: Medium Carbon Steel 080M40(EN8).

### Performance

Weight: 1.51kg (1:1), 1.75kg (2:1) 2.04kg (3:1), 2.14kg (4:1)

Backlash:  $\approx 1^\circ$ .

Max Input Speed: 2000 Rpm.

Greased for life: Shell Alvania Grease HDX2.

### Output Torque Nm

Rpm Input	Reduction Ratio			
	1:1	2:1	3:1	4:1
2000	2.00	1.10	2.30	2.20
1000	2.30	1.20	2.60	2.50
500	2.70	1.40	3.00	2.80
200	3.20	1.70	3.60	3.40
100	3.50	2.00	4.00	3.70
50	3.90	2.20	4.50	4.20
10	5.00	2.90	6.00	5.50

### Other Info.

Testing in your applications is necessary.

You will need to assess duty, cycles and confirm gearbox suitability with your own calculations.

Torque figures are to be used for guidance only.



[sales@rinomechanical.com](mailto:sales@rinomechanical.com)



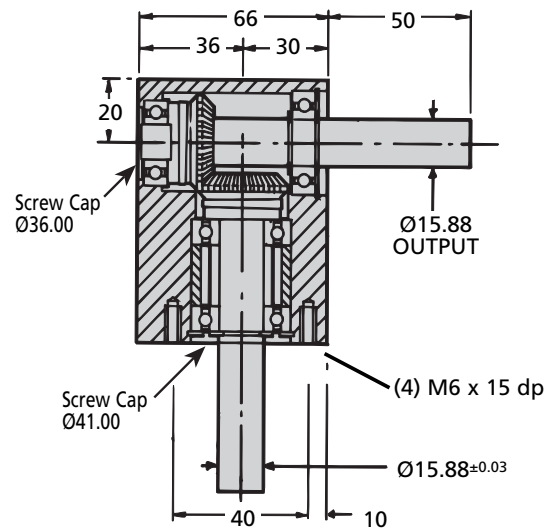
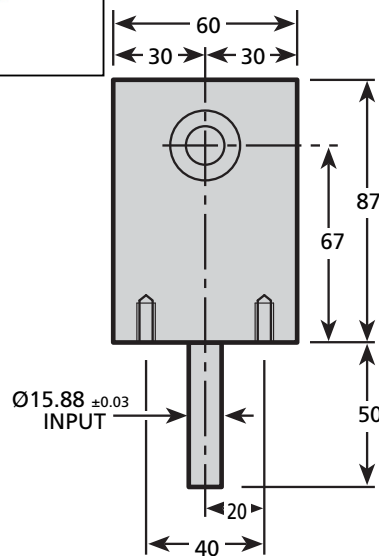
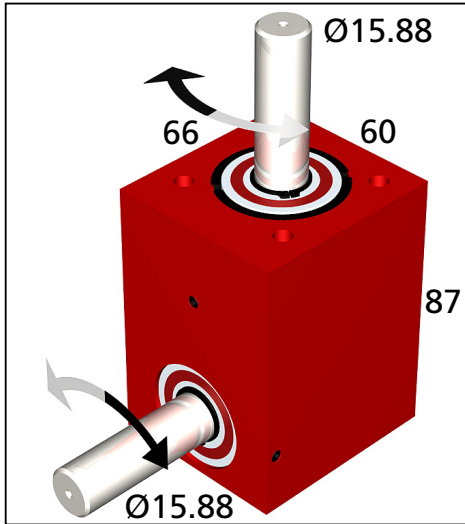
[www.rinomechanical.com](http://www.rinomechanical.com)

**rino**

**BL18**e-cad  
Drawings  
Available

# GEARBOXES

## Bevel Tee Gearbox

Right Angled Drive & Hardened Teeth 4Nm – 10Nm **1:1**

**Part Number**  
BL18-XH-1

**Ratio**  
1:1 Hardened

**Efficiency at 1000 Rpm**  
88%

### Material

Case: Aluminium.

Bevel: Medium Carbon Steel 080M40(EN8).

### Performance

Weight: 1.3kg

Backlash: ≈1°.

Max Input Speed: 2000 Rpm.

Greased for life: Shell Alvania Grease HDX2.

### Other Info.

Testing in your applications is necessary.

You will need to assess duty, cycles and confirm gearbox suitability with your own calculations.

Torque figures are to be used for guidance only.

### Output Torque Nm

Rpm Input	Reduction Ratio
	1:1 Hardened
2000	4.00
1000	4.60
500	5.40
200	6.40
100	7.00
50	7.80
10	10.00

**rino** Toll Free!



1-888-260-7466



516-867-5656